

COLONY AT LAKE WORTH P.U.D.

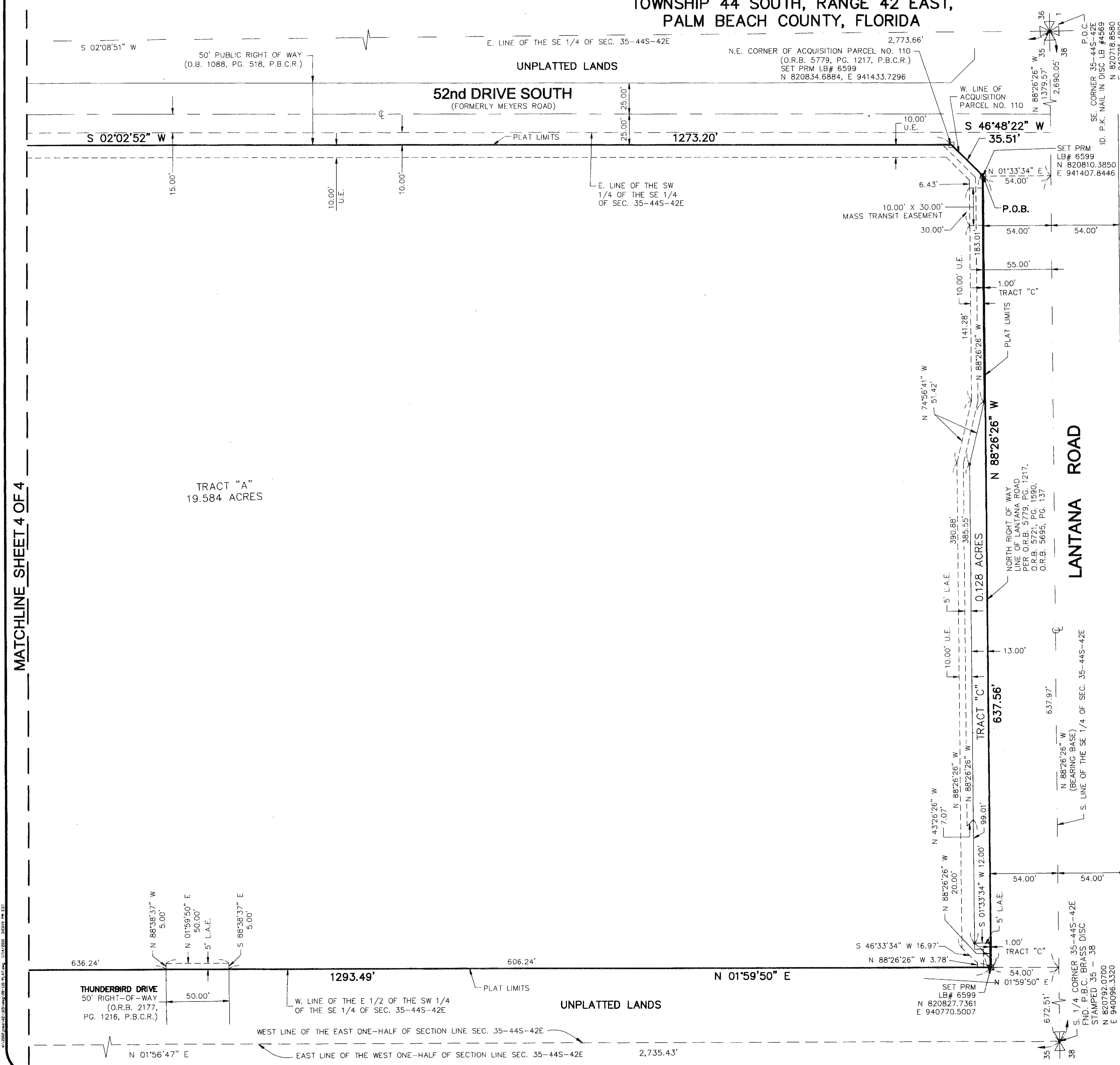
BEING A PLAT OF A PORTION OF THE SOUTHEAST 1/4, SECTION 35,
TOWNSHIP 44 SOUTH, RANGE 42 EAST,
PALM BEACH COUNTY, FLORIDA

STATE OF FLORIDA)
COUNTY OF PALM BEACH) S.S.

THIS INSTRUMENT WAS FILED FOR
RECORD AT _____ M.
THIS _____
DAY OF _____, 20____
AND DULY RECORDED IN:
PLAT BOOK _____
ON PAGE _____
SHARON R. BOCK
CLERK CLERK & COMPTROLLER
PALM BEACH COUNTY
BY: _____
DEPUTY CLERK

SHEET 3 OF 4

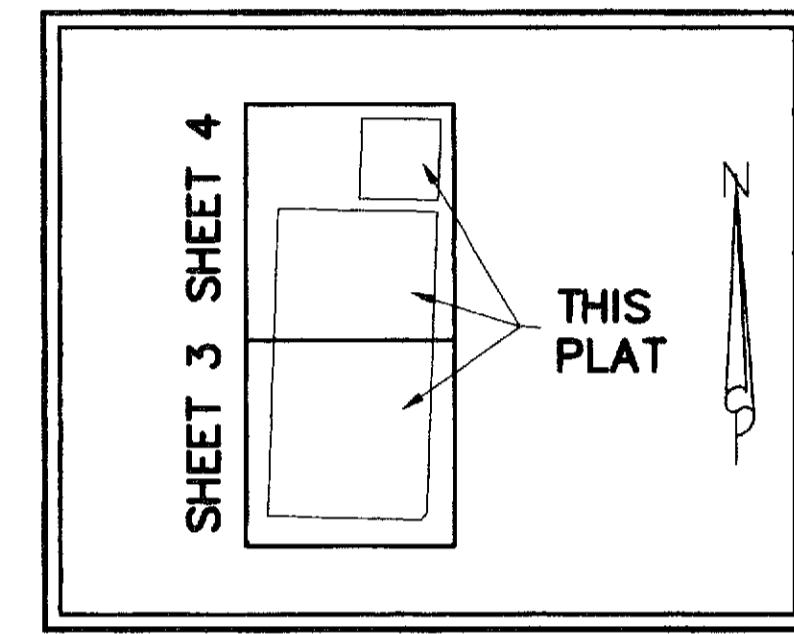
MATCHLINE SHEET 4 OF 4



TRACT "A"
19.584 ACRES

LANTANA ROAD

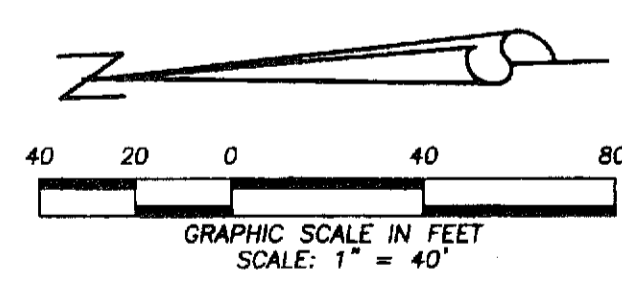
"WINSTON TRAILS PARK"
PARCEL "A"
(P.B. 71, PGS. 183 & 184, P.B.C.R.)



KEY MAP
NOT TO SCALE

LEGEND

- L.A.E. = LIMITED ACCESS EASEMENT
- LB = LICENSED BUSINESS
- O.R.B. = OFFICIAL RECORD BOOK
- P.R.M. = PERMANENT REFERENCE MONUMENT
- P.B. = PLAT BOOK
- O.R.B. = OFFICIAL RECORDS BOOK
- P.B.C.R. = PALM BEACH COUNTY RECORDS
- P.B.C.U.E. = PALM BEACH COUNTY UTILITY EASEMENT
- P.C. = PAGE(S)
- P.O.B. = POINT OF BEGINNING
- P.O.C. = POINT OF COMMENCEMENT
- R/W = RIGHT OF WAY
- D.E. = DRAINAGE EASEMENT
- F.P.L. = FLORIDA POWER AND LIGHT
- U.E. = UTILITY EASEMENT
- R.O.W. = RIGHT-OF-WAY
- L.M.E. = LAKE MAINTENANCE EASEMENT
- (D) = DESCRIBED
- = SET 5/8" IRON ROD WITH CAP LB# 6599
- = PERMANENT REFERENCE MONUMENT (P.R.M.)
- 4" X 4" CONCRETE MONUMENT WITH P.K. NAIL IN BRASS DISC STAMPED "PRM LB 6599"
- ⊕ = CENTERLINE



THIS INSTRUMENT WAS PREPARED BY:
DAVID A. BOWER, P.S.M. #5888 IN THE OFFICES OF
DENNIS J. LEAVY AND ASSOCIATES, INC.
460 BUSINESS PARK WAY, SUITE B
ROYAL PALM BEACH, FLORIDA 33411
(561) 753 - 0650

DENNIS J. LEAVY & ASSOCIATES, INC.
LAND SURVEYORS AND MAPPERS

460 BUSINESS PARK WAY • SUITE B • ROYAL PALM BEACH, FL • 33411
PHONE: (561) 753-0650 FAX: (561) 753-0290

SCALE: 1" = 40' CHECKED BY: DAB DATE: 01/14/10
DRAWN BY: A.P. JOB NO.: 08-110